


[AMANS MATHS BLOGS.COM](http://AMANS MATHS BLOGS.COM)

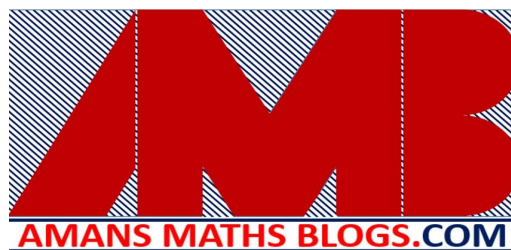
## **JSTSE PREVIOUS YEARS**

### **BIOLOGY : DIVERSITY IN LIVING ORGANISMS**

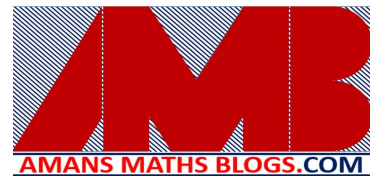
---

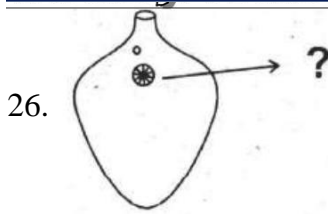
1. The population of which of the following is maximum on the earth. [2011]  
(a) Reptiles (b) Fishes  
(c) Birds (d) Beetles
  2. The fact which supports the idea that viruses are living is that they : [2011]  
(a) Can be crystallised (b) Are made up of common chemicals  
(c) Duplicate themselves (d) Penetrates cell membranes
  3. An ant can see the objects all around it due to the presence of: [2011]  
(a) Simple eyes (b) Eyes over the head  
(c) Well developed eyes (d) Compound eyes
  4. The bats are able to fly in dark since their wings produce: [2011]  
(a) Sound waves (b) Ultrasonic waves  
(c) Infrared rays (d) Ultra violet rays
  5. The function of tongue in snakes is to [2011]  
(a) Taste the food (b) Smell the food  
(c) Catch the food (d) Detect the food
  6. Which of the following is a cold blooded animal ? [2011]  
(a) Whale (b) Penguin  
(c) Otter (d) Tortoise
- 
- [AMANS MATHS BLOGS.COM](http://AMANS MATHS BLOGS.COM)
7. Which one of the following constitutes the two best reasons for distinguishing the living from the non-living ? [2011]  
(a) Growth and locomotion (b) Respiration and excretion  
(c) Irritability and locomotion (d) Reproduction and locomotion

8. The Human Immuno deficiency virus (HIV) is a living entity because it can : [2011]  
 (a) Move from one cell to another  
 (b) Undergo auto-reproduction  
 (c) Disturb host cell respiration  
 (d) Excrete in human sperm
9. The characteristic feature of virus is that [2011]  
 (a) It lacks chlorophyll (b) It multiplies only on dead animals  
 (c) It is made of fats (d) It multiply only on hosts
10. Snake bite first affects the [2011]  
 (a) Nervous system (b) Lungs  
 (c) Blood circulation (d) Brain
11. Which of the following is true : [2011]  
 (a) All bacteria respire  
 (b) All bacteria are anaerobic  
 (c) All bacteria are photosynthetic  
 (d) All bacteria are non-photosynthetic
12. Which of the plants bears seeds but no fruits [2011]  
 (a) Eucalyptus (b) Peepal  
 (c) Pine (d) Cotton
13. The part of Cinchona plant which yields quinine is : [2011]  
 (a) Root (b) Leaf  
 (c) Flower (d) Bark
14. Internal parasites like worms affect stomach and intestine while flukes damage. [2012]  
 (a) Kidney (b) Heart  
 (c) Lungs (d) Liver
15. The scheme of classification is: [2012]  
 (a) Phylum, kingdom, family (b) Kingdom, Phylum, Class  
 (c) Phylum Kingdom order (d) Kingdom, Order, Family
16. Widely used classification is proposed by [2012]  
 (a) Haeckel (b) Whittaker  
 (c) Woese (d) Edison



17. Monera group includes [2012]  
(a) Green algae (b) Amoeba  
(c) Plantae (d) Cynobacteria
18. Lichens is the symbiotic relationship between [2012]  
(a) Fungus and bacteria (b) Fungus and green algae  
(c) Fungus and funaria (d) Fungi and blue green algae
19. These are called the amphibians of the plant kingdom [2012]  
(a) Algae (b) Pteridophyta  
(c) Bryophyta (d) Fungus
20. Naked embryos of thallophytes & pteridophytes are called [2012]  
(a) egg (b) gametes  
(c) spores (d) seed
21. Seeds are enclosed in fruits [2012]  
(a) Gyrnosperm (b) Angiosperm  
(c) Phanerogam (d) Bryophyta
22. Tamarind is a [2012]  
(a) Gymnosperm plat (b) Dicot plant  
(c) Monocot plant (d) Saprophyte
23. An animal have two layers of cells [2012]  
(a) Jellyfish (b) Spongo  
(c) Fluke (d) Spirogyra
24. Annelid animals have [2012]  
(a) Triploblasticbutnocoelom  
(b) Triploblastic & pseudocoelom  
(c) Triploblastic and doreiventvally flattened  
(d) Triploblastic & true body cavity
25. Palaemon, Scolopendra, Palamnacus animals of group [2012]  
(a) Echinodermata (b) Mollusca  
(c) Arthropoda (d) Annelida





[2012]

- (a) Mouth (b) Eyes  
(c) Scolex (d) Acetabulum

27. Shark fish have [2012]

- (a) Three chambered heart (b) Two chambered heart  
(c) No heart (d) Four chambered heart

28. Which one is not warm blooded animal [2012]

- (a) Pigeon (b) Fish  
(c) Rat (d) Bat

29. Starfish belongs to phylum: [2013]

- (a) Mollusca (b) Coelenterate  
(c) Arthropoda (d) Echinodermata

30. Ulothrix belongs to [2013]

- (a) Thallophyta (b) Amoeba  
(c) Bryophyta (d) None of the above

31. Plants with naked seeds are found in [2013]

- (a) Bryophyta (b) Gymnosperm  
(c) Angiosperm (d) Pteridophyta

32. Which is not a cold blooded animal? [2013]

- (a) Turtle (b) Bat  
(c) Snake (d) Lizard

33. Neem tree is [2013]

- (a) Annual (b) Binneal  
(c) Shrub (d) Perrineal

34. Mammals who do not give birth to young [2013]

- (a) Echidna (b) Bat  
(c) Rat (d) Cat

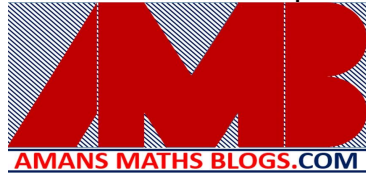
35. System of Scientific naming includes [2013]  
(a) Phylum and genus (b) Class and species  
(c) Genus and species (d) Genus and class
36. The Origin of Species' is written by: [2014]  
(a) Charles Brown (b) Lamark  
(c) Mendel (d) Charles Darwin
37. What is the Basic Unit of classification? [2014]  
(a) Species (b) Genus  
(c) Family (d) Class
38. Who was the writer of the book 'Systema Naturae': [2014]  
(a) Robert Whittaker (b) Carolres Linnaeus  
(c) Charles Darwin (d) Robert Brown
39. The figure given below shows as Electric Ray (Torpedo). The part Labelled as 'F' called:



- (a) Pelvic fin (b) Candal fin [2014]  
(c) Dorsal fin (d) Pectroal fin
40. The plant group which does not have 'Hidden reproductive organ' are: [2014]  
(a) Bryophyta (b) Pteridophyta  
(c) Thallophyta (d) Angiosperms
41. Which of these organisms the body is bilaterally symmetrical? [2014]  
(a) Sea anemone (b) Liver fluke  
(c) Sycon (d) Hydra
42. The part labelled as 'D' in the figure of Paramecium given below is called as [2014]



- (a) Cytosome (b) Oral groove  
(c) Cytopyge (d) Eye spot

43. The largest group of Animal Kingdom is: [2014]  
(a) Annelida (b) Arthropoda  
(c) Nematoda (d) Mollusca
44. Pseudocoelom is a characteristic feature of phylum: [2014]  
(a) Coelenterata (b) Platyhelminthes  
(c) Annelida (d) Nematoda
45. Which of the following is not the basis of five kingdom classification? [2014]  
(a) Cell structure (b) Chromosome behaviour  
(c) Mode of Nutrition (d) Body organisation
46. Plants having well differentiated reproductive tissue that ultimately make seeds are called: [2014]  
(a) Cryptogams (b) Phanerogams  
(c) Pteridophytes (d) Bryophytes
47. Species of plants and animals found exclusively in a particular area are called: [2015]  
(a) Endangered (b) Biological  
(c) Endemic (d) Exotic
48. The organisms present in the faces of mammals which are indicators of quality of water are: [2015]  
(a) Bacteria (b) Fungus  
(c) Algae (d) Virus
- 
49. The plants having inconspicuous or hidden reproduction organs are placed in: [2015]  
(a) Cryptogamae (b) Phanerogamae  
(c) Angiospermae (d) Gymnospermae
50. A true body cavity called coelom is present in phylum: [2015]  
(a) Coelenterata (b) Platyhelminthes  
(c) Nematode (d) Annelida
51. The record of all endangered plants and animals is called as: [2015]  
(a) Flora (b) Monograph  
(c) Manual (d) Red Data Book
52. "The Origin of Species" is written by: [2015]  
(a) Charles Brown (b) Lamark  
(c) Robert Hooke (d) Charles Darwin

53. Mushroom belongs to: [2015]  
(a) Algae (b) Fungi  
(c) Plantae (d) Protozoa
54. Which is called Amphibians of the plant kingdom: [2015]  
(a) Gymnosperms (b) Bryophyte  
(c) Thallophyta (d) Angiosperms
55. The largest group of animal kingdom is: [2015]  
(a) Arthropoda (b) Mollusca  
(c) Porifera (d) Cnidarian
56. Mammals who do not give birth to young one [2015]  
(a) Rat (b) Bat  
(c) Echidna (d) Cat

